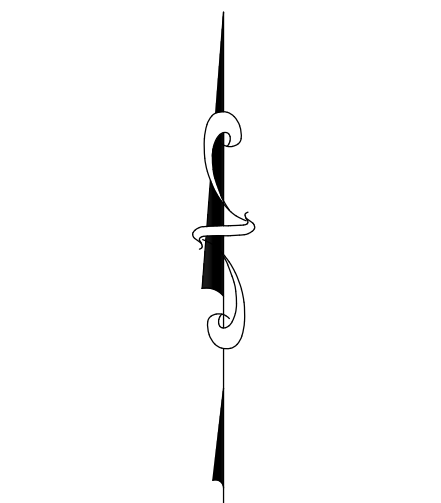
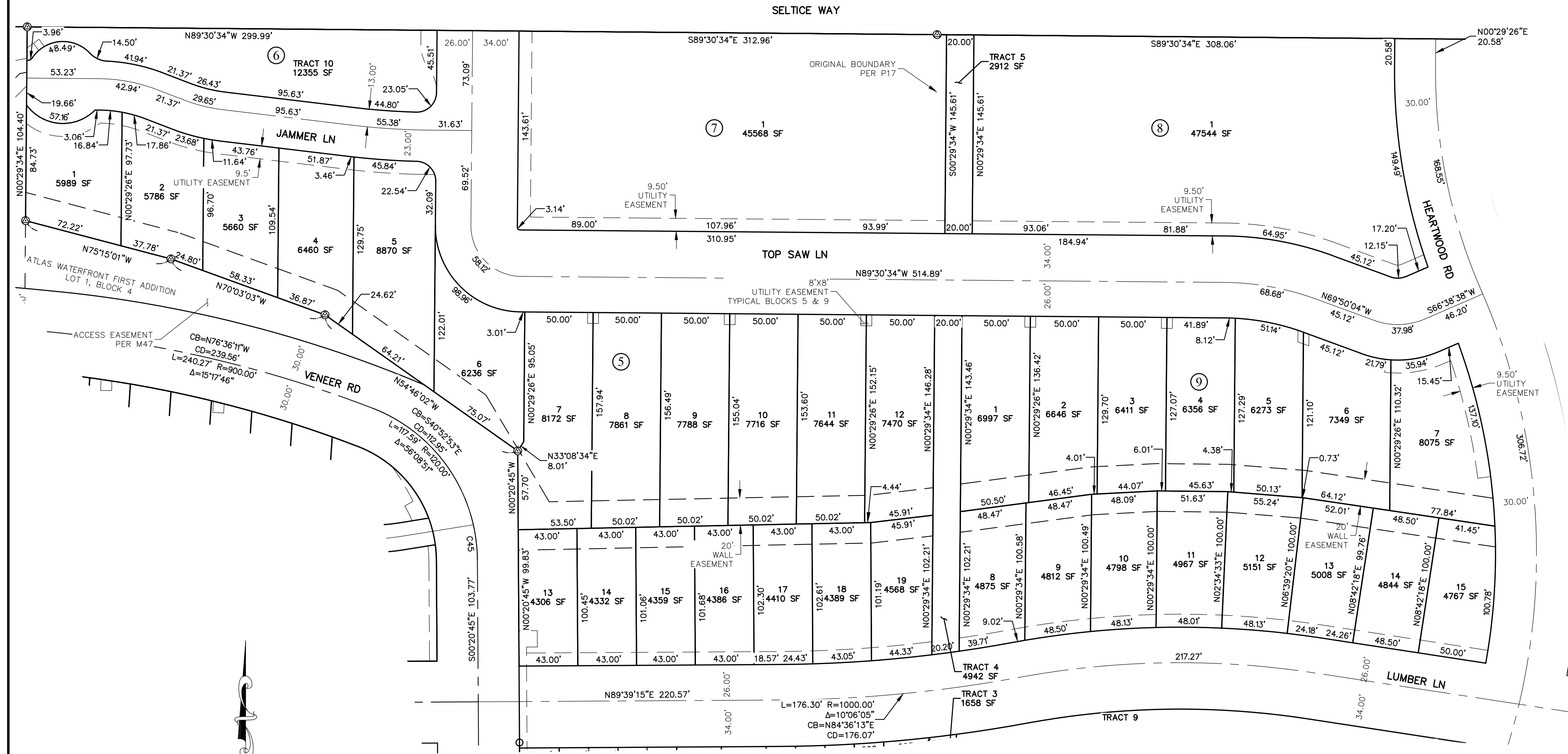


ATLAS WATERFRONT SECOND ADDITION - RFP5

A REPLAT OF BLOCKS 5, 8, 9, 10, 11, 12 AND TRACT 1 OF ATLAS WATERFRONT FIRST ADDITION
 LOCATED IN GOV'T LOTS 1, 2, 3, 4 AND THE NORTHEAST QUARTER OF SECTION 10, TOWNSHIP 50 NORTH, RANGE 4 WEST, BOISE MERIDIAN, CITY OF
 COEUR D'ALENE, KOOTENAI COUNTY, IDAHO



GRAPHIC SCALE
 0 25 50 100
 (IN FEET)
 1 inch = 50 ft.

<p>www.welchcomer.com 330 E. Lakeside Ave, Suite 101 Coeur d'Alene, ID 83814</p>	208-664-9382 (toll free) 877-815-5672 (fax) 208-664-5946	ATLAS WATERFRONT SECOND ADDITION - RFP5		PROJECT NO.: 41292.03
		IN GOVT LOTS 1, 2, 3 & 4 & THE NE 1/4 OF SECTION 10, T 50 N, R 4 W, B.M., COEUR D'ALENE, KOOTENAI CO., ID		DESIGNED BY: MLH
		SCALE: 1" = 80'		DRAWN BY: GJG
		SHEET NO:		CHECKED BY: MLH
				NAME: 41292 RFP5.DWG DATE: JANUARY, 2022