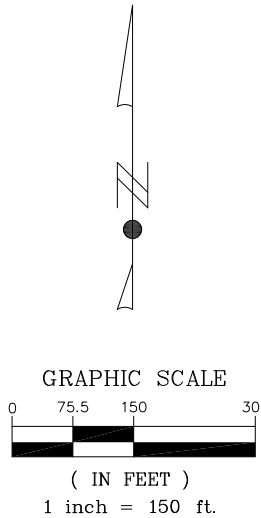
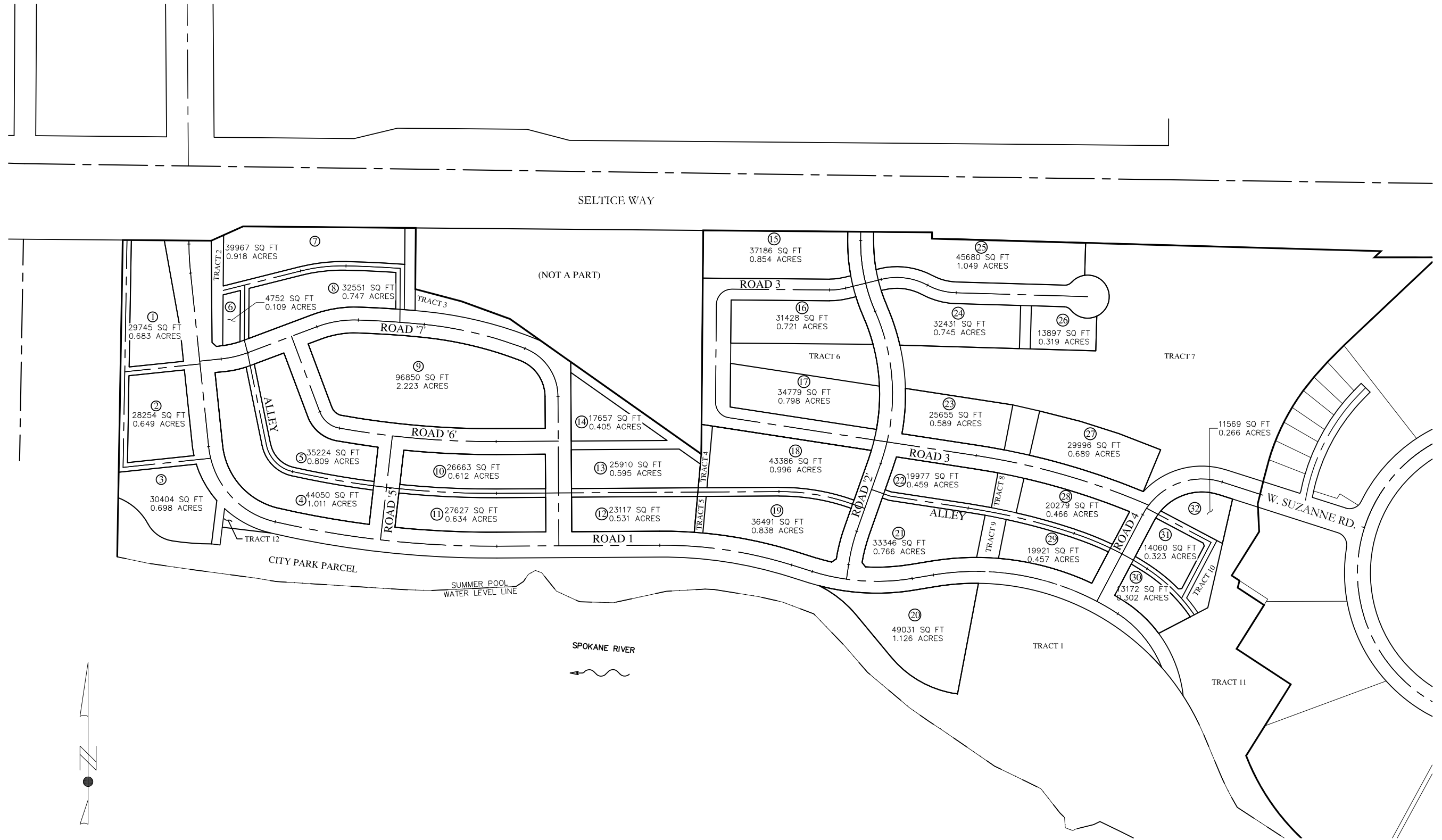


**PRELIMINARY PLAT**  
**ATLAS WATERFRONT FIRST ADDITION**  
 A REPLAT OF ATLAS WATERFRONT LOCATED IN GOV'T LOTS 1, 2, 3, 4 AND THE NORTHEAST  
 QUARTER OF SECTION 10, TOWNSHIP 50 NORTH, RANGE 4 WEST, BOISE MERIDIAN,  
 CITY OF COEUR D'ALENE, KOOTENAI COUNTY, IDAHO



**WELCH-COMER**  
 ENGINEERS | SURVEYORS

www.welchcomer.com  
 350 E. Kathleen Ave.  
 Coeur d'Alene, ID 83815

208-664-9382  
 (toll free) 877-815-5672  
 (fax) 208-664-5946

**EXHIBIT**  
**BLOCK ACREAGES**

IN THE N 1/2 OF SEC. 10,  
 T.50N., R.4W., B.M.,  
 COEUR D'ALENE, KOOTENAI CO., ID

PROJECT NO.: 41292.03  
 DESIGNED BY:  
 DRAWN BY:  
 CHECKED BY: MLH  
 DWG NAME: 41292PLAT2.DWG  
 DATE: 3-20-2020  
 SCALE: 1" = 150'  
 SHEET NO:

**1 OF 1**