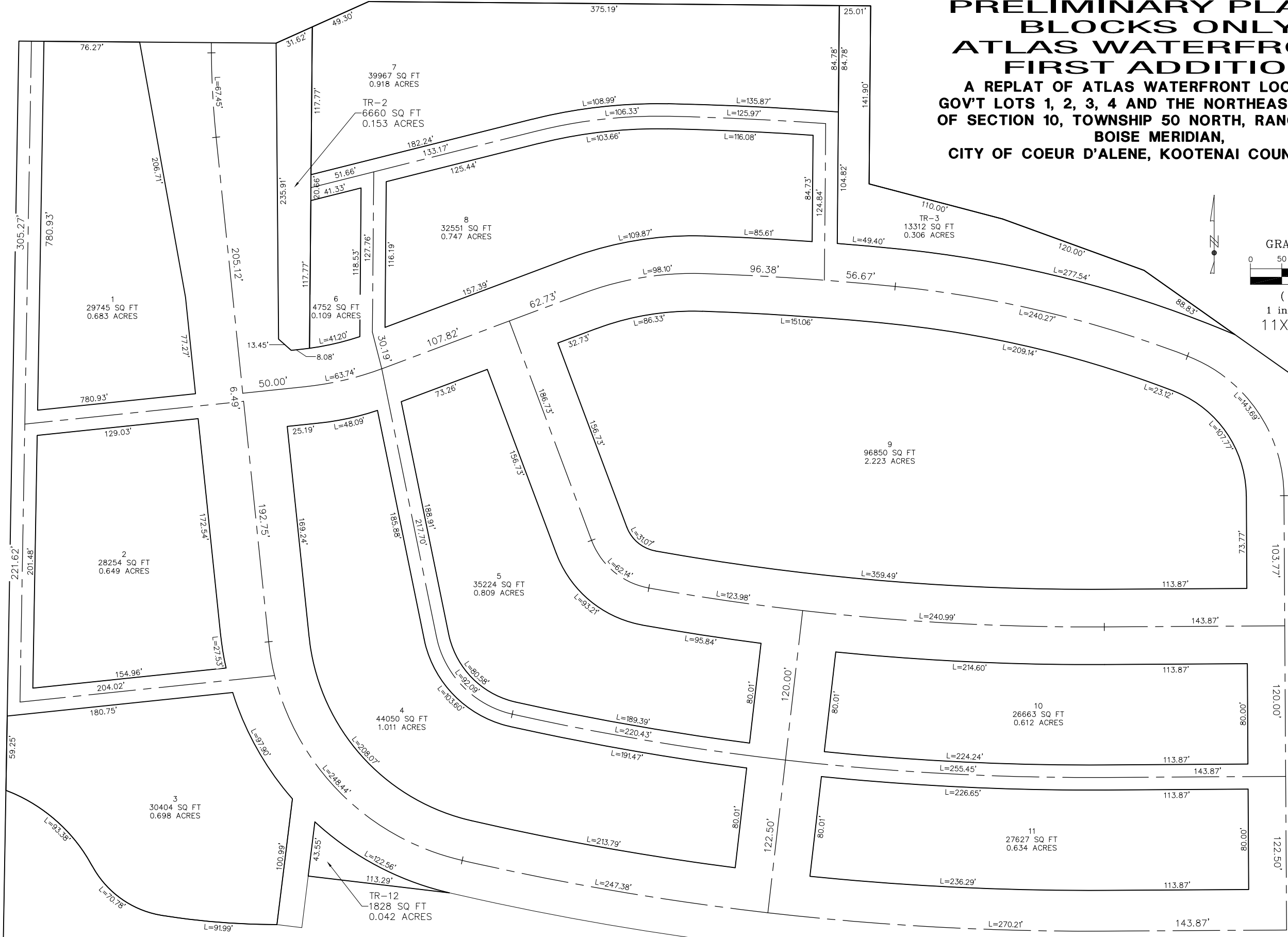
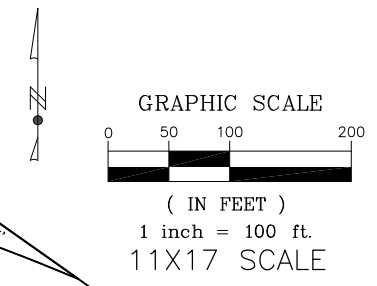


PRELIMINARY PLAT — BLOCKS ONLY ATLAS WATERFRONT FIRST ADDITION

A REPLAT OF ATLAS WATERFRONT LOCATED IN
GOV'T LOTS 1, 2, 3, 4 AND THE NORTHEAST QUARTER
OF SECTION 10, TOWNSHIP 50 NORTH, RANGE 4 WEST,
BOISE MERIDIAN,
CITY OF COEUR D'ALENE, KOOTENAI COUNTY, IDAHO



WELCH-COMER
ENGINEERS & SURVEYORS

www.welchcomer.com 208-664-9382
330 E. Lakeside Ave, Suite 101 (toll free) 877-815-5672
Coeur d'Alene, ID 83814 (fax) 208-664-5946

ATLAS WATERFRONT
PHASE 1 - BLOCKS ONLY

SECTION 10, T50N, R4W
COEUR D'ALENE
KOOTENAI COUNTY, IDAHO

PROJECT NO.: 41292
DESIGNED BY: MLH
DRAWN BY: MLH
CHECKED BY: MLH
NAME: 41292 PH1 PRELIM.DWG
DATE: 3-20-2020
SCALE: 1" = 100'
SHEET NO:

1



PRELIMINARY. THE 1ST ADDITION PLAT HAS
BEEN SUBMITTED AND APPROVED BY THE
PLANNING COMMISSION.
THIS FILE IS NOT INTENDED TO BE THE
FINAL PLAT DOCUMENT