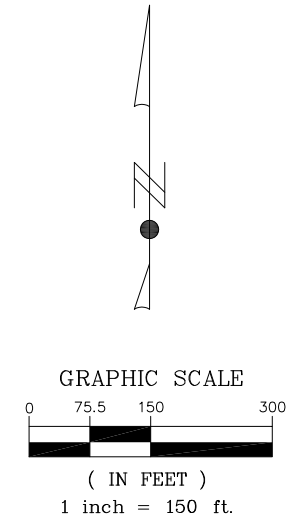
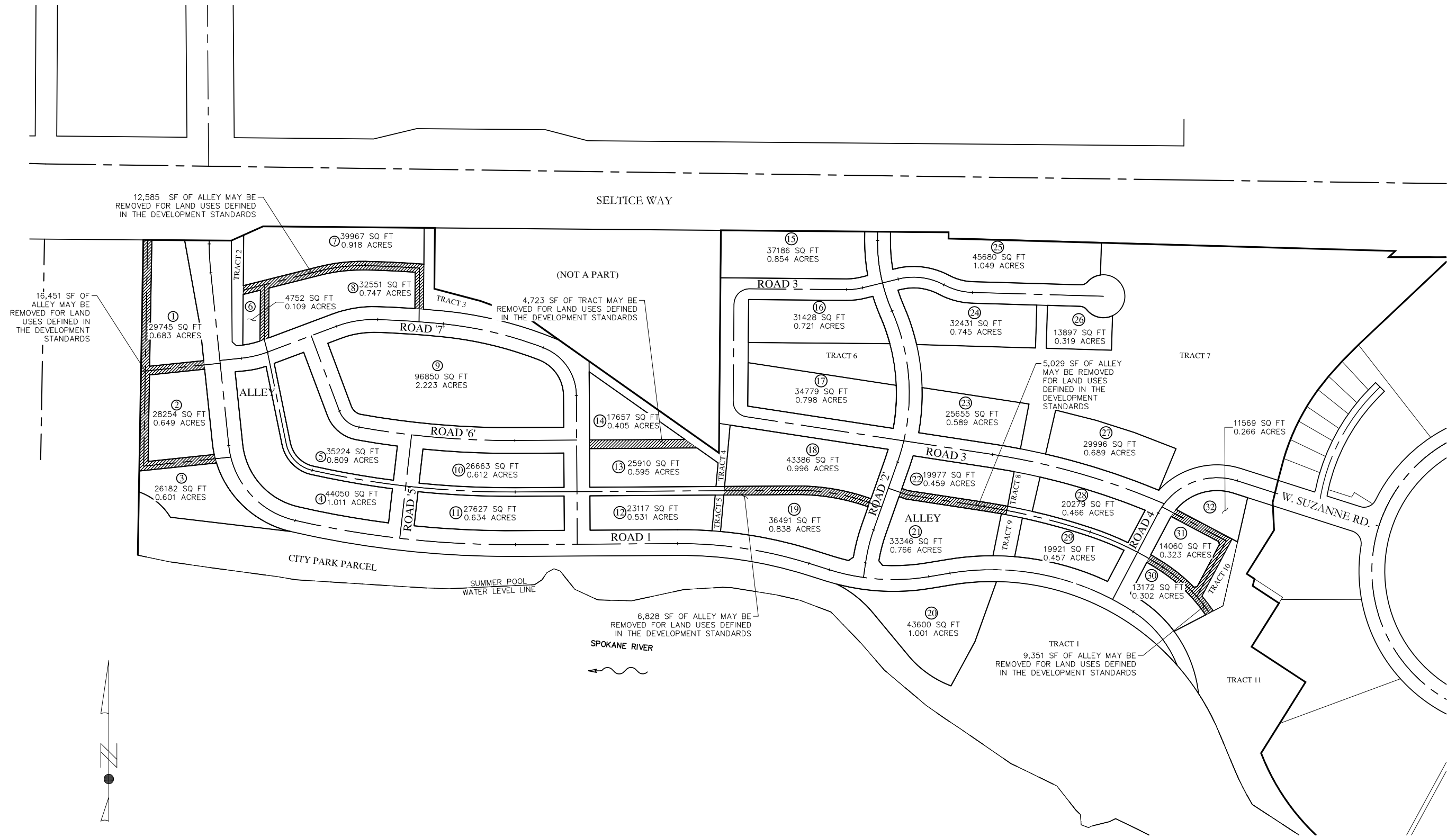


PRELIMINARY PLAT

ATLAS WATERFRONT FIRST ADDITION

A REPLAT OF ATLAS WATERFRONT LOCATED IN GOV'T LOTS 1, 2, 3, 4 AND THE NORTHEAST QUARTER OF SECTION 10, TOWNSHIP 50 NORTH, RANGE 4 WEST, BOISE MERIDIAN, CITY OF COEUR D'ALENE, KOOTENAI COUNTY, IDAHO



WELCH-COMER ENGINEERS & SURVEYORS www.welchcomer.com 350 E. Kathleen Ave. Coeur d'Alene, ID 83815	208-664-9382 (toll free) 877-815-5672 (fax) 208-664-5946	EXHIBIT		PROJECT NO.: 41292.03
		BLOCK ACREAGES		DESIGNED BY:
		IN THE N 1/2 OF SEC. 10, T.50N., R.4W., B.M., COEUR D'ALENE, KOOTENAI CO., ID		DRAWN BY:
		1 OF 1		CHECKED BY: MLH
		DWG NAME: 41292PLAT2.DWG	DATE: 10-29-19	SCALE: 1" = 150'
		SHEET NO:		